

From Automation to Transformation: AI Strategies for Personalized, Engaging, and Inclusive Online Course Design

Authors:

Siobahn Day Grady, PhD, Director, Institute for Artificial Intelligence and Emerging Research (IAIER),
Program Director & Assistant Professor of Information Science, North Carolina Central University and

Racheal Brooks, PhD, Director of QA Implementation Solutions, Quality Matters

May 8, 2025

RECOMMENDED ACTION PLAN

- ✓ Prioritize ethical and intentional AI implementation that centers learner equity and accessibility.
- ✓ Conduct regular bias audits and ensure AI tools support diverse learning needs and perspectives.
- ✓ Maintain human oversight and empathy while using AI as a complementary learning enhancement tool.

© 2025 Quality Matters



qualitymatters.org

AI Strategies for Inclusive and Transformative Online Learning...

A QM White Paper Conversation

Siobahn Day Grady, PhD

Director | Institute for Artificial Intelligence & Emerging Research
Associate Professor & Program Director of Information Science
North Carolina Central University

Racheal Brooks, PhD

Director | Quality Assurance Implementation Solutions
Quality Matters



NCCentral
UNIVERSITY

Institute for Artificial Intelligence
and Emerging Research

November 4, 2025

 [Download the white paper](#)



**Director | Institute for Artificial Intelligence & Emerging Research
Associate Professor & Program Director of Information Science
North Carolina Central University**

Siobahn Day Grady, PhD

**Director of Quality Assurance Implementation Solutions
Quality Matters**

Racheal Brooks, PhD



Impact Through Quality Connections
November 3 – 5, 2025 | Tucson, Arizona

A Guide for Our Conversation

- 01 AI Strategies for Online Personalization
- 02 Amplifying Online Engagement with AI
- 03 AI for Inclusive and Accessible Online Learning
- 04 Recommendations and Practical Strategies



Impact Through Quality Connections
November 3 – 5, 2025 | Tucson, Arizona

AI started with
automating tasks
like grading and
plagiarism
detection
(Luckin & Holmes,
2016)

Progressed to
chatbots and
smart scheduling

Now used in
adaptive learning
and predictive
analytics
(Sajja et al., 2024)

Natural language
processing
supports context-
based student
feedback
(Alhawiti, 2014)

Generative AI
enables dynamic
course content
aligned to
student
performance
(Ouyang et al., 2023)

Evolution of AI in Online Learning

AI Strategies for Personalization in Online Learning



Impact Through Quality Connections
November 3 – 5, 2025 | Tucson, Arizona



Personalization Strategies At a Glance

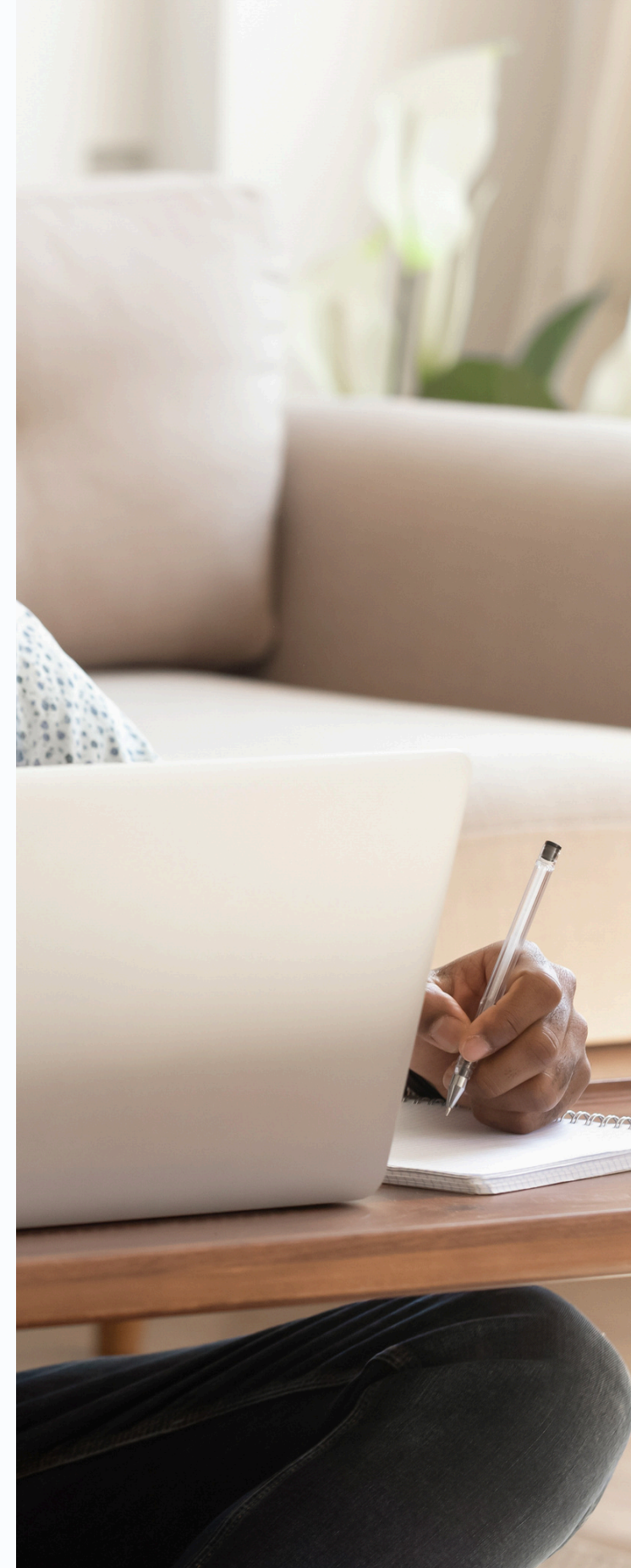
- AI can scale personalized instruction across online learning environments
- Enhances learner autonomy, motivation, and academic performance (Alamri et al., 2020)
- Supports varied learning paces and pathways
- Encourages inclusion by adapting to students' unique identities
- Builds foundational trust and relevance in digital spaces



Impact Through Quality Connections
November 3 – 5, 2025 | Tucson, Arizona

Adaptive Learning & Real-Time Personalization

- AI tailors content, pacing, and scaffolding based on learner behavior.
- Delivers dynamic feedback through natural language processing (NLP) (Amazon, n.d.)
- Offers visual/audio/text support aligned to learner preferences
- Enhances student retention and success (Song et al., 2024)
- Reduces cognitive overload with just-in-time resources (Das et al., 2023)




Predictive Analytics for Student Success

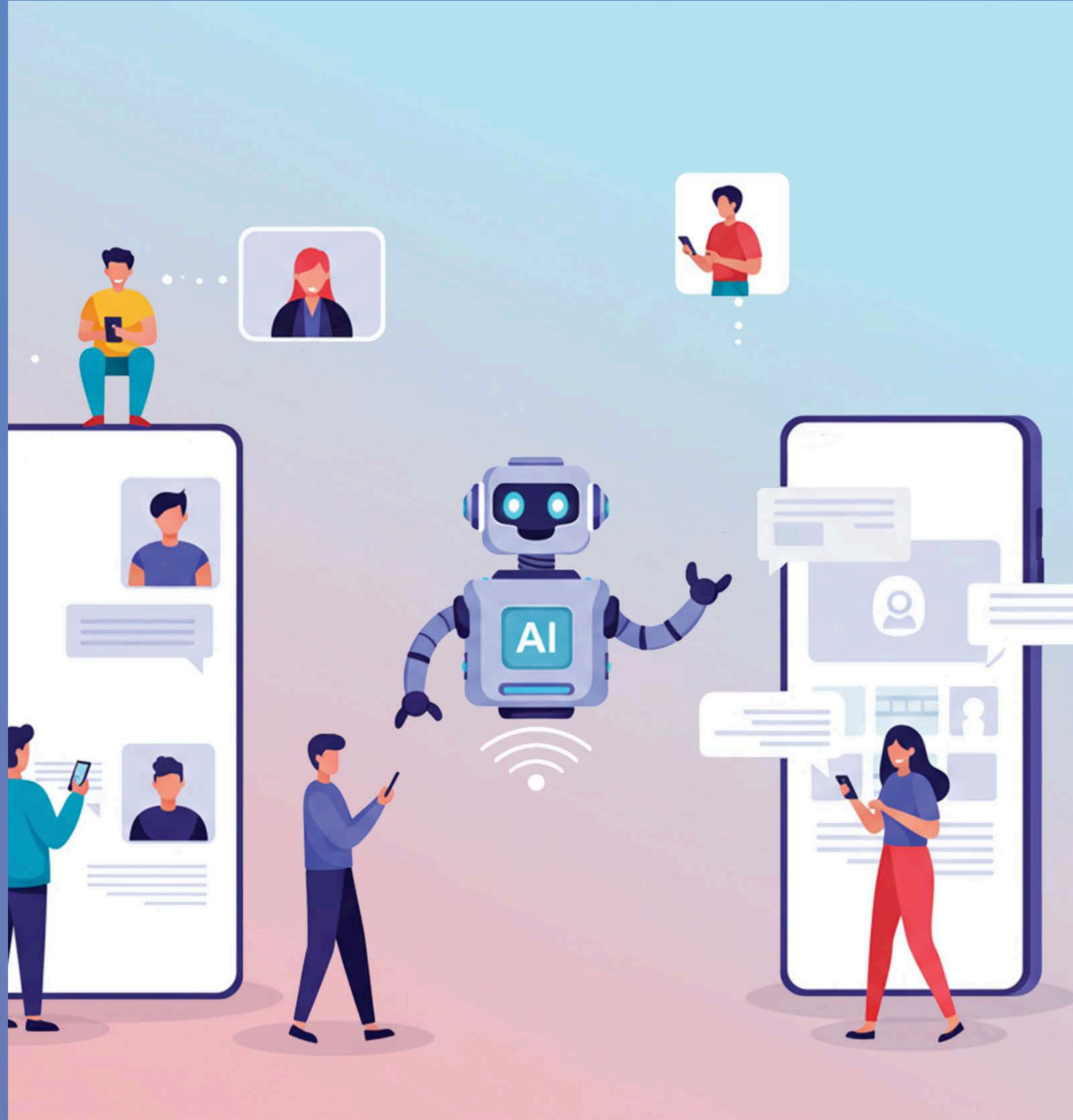
- Uses real-time data to identify disengaged learners (Latif et al., 2021)
- Provides early alerts for instructor intervention
- Encourages equitable support through data-informed outreach
- Has improved success rates in STEM courses (Hasan & Khan, 2023)
- Promotes continuous monitoring and timely feedback cycles



Impact Through Quality Connections
November 3 – 5, 2025 | Tucson, Arizona

- 
- AI adapts case studies and examples to match learner demographics
 - Affirms student identity through inclusive representation (Bakkum et al., 2024)
 - Offers multilingual content and accessibility-focused design
 - Encourages learner choice in format and topic selection
 - Must be critically implemented to avoid bias and exclusion (Noble, 2018)

Personalization for Equity & Identity



Amplifying Online Engagement with AI



Impact Through Quality Connections
November 3 – 5, 2025 | Tucson, Arizona



AI to Amplify Online Student Engagement

- AI supports interactive content through real-time learner adaptation
- Promotes self-regulated learning with intelligent feedback loops
- Encourages emotional and cognitive investment (Pertiwi et al., 2024)
- Tailors learning paths based on interests and goals
- Supports higher-order thinking through dynamic tasks

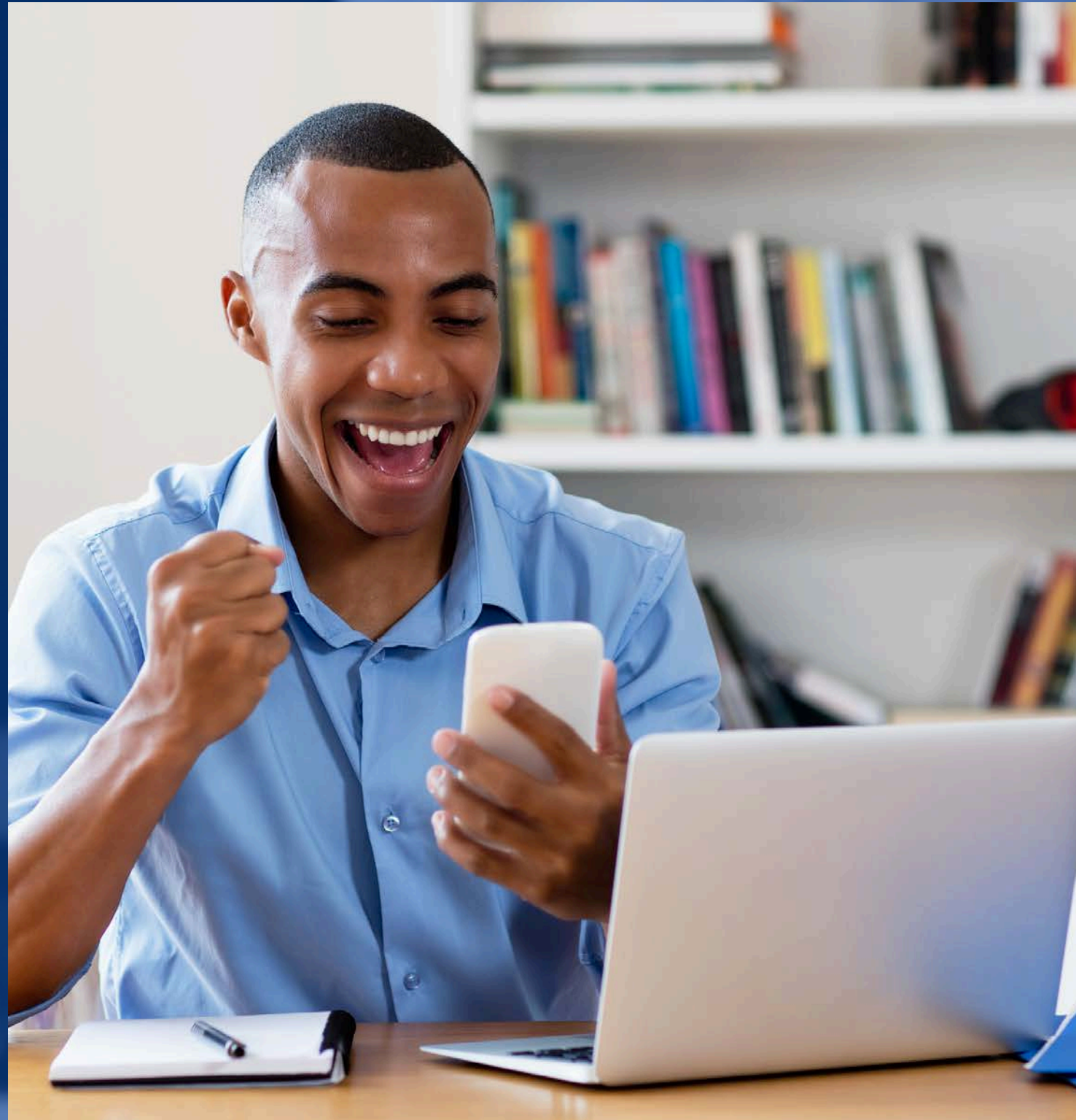
Interactive Learning Experiences

- Enables simulations, adaptive branching, and immersive scenarios
- Offers responsive hints and contextual nudges
- Customizes difficulty based on learner performance
- Facilitates challenge, clarity, and enrichment (**Naseer et al., 2024**)
- Increases engagement and deep learning

Social Engagement & Collaboration

- Matches peers for collaboration based on interests and goals
- Encourages peer feedback and balanced participation
- Sends reminders to sustain interaction in discussion boards
- Promotes a sense of learning community and belonging (**Moore, 1991**)
- Uses AI to monitor and guide social presence development

AI for Inclusive and Accessible Online Learning



Impact Through Quality Connections
November 3 – 5, 2025 | Tucson, Arizona

AI for Inclusive and Accessible Online Learning

Artificial intelligence is transforming industries across the globe, and it's essential that AI technologies are developed with equity and inclusivity at their core.

- Melonie Parker, Google

- AI supports Universal Design for Learning (UDL) by generating alternative text, captions, and transcripts
- Adapts content for students with ADHD, dyslexia, or multilingual needs (Lazányi, 2023)
- Simplifies language and enhances comprehension
- Enables interface customization for neurodiverse learners
- Supports legal compliance with accessibility requirements (Acosta-Vargas et al., 2024)



Impact Through Quality Connections
November 3 – 5, 2025 | Tucson, Arizona

Reducing Bias in AI-Generated Content

- AI reflects the biases of its training data
- Without audits, outputs can perpetuate stereotypes
(Marcinkowski et al., 2020)
- Content should be reviewed for inclusivity and representation
- Diverse datasets and stakeholders must guide implementation
(Gong et al., 2019)
- Instructors should regularly inspect AI outputs for equity
(Greene et al., 2019)



Ethical Considerations for AI Use

- Inform students how and when AI is used
- Ensure compliance with data privacy laws (Huang, 2023)
- Provide opt-out options when feasible

- Avoid AI over-surveillance and misuse (Nguyen et al., 2023)
- Maintain transparency in AI decision-making processes





Recommendations and Practical Strategies for Educators



Impact Through Quality Connections
November 3 – 5, 2025 | Tucson, Arizona

Practical Strategies for AI Use in Online Learning

Aligned with the Quality Matters [Higher Education Rubric, Seventh Edition](#), [QM Consulting Services](#), and [QM Professional Development](#)

Quality Design Strategies	Ethical Delivery	Institutional Actions
Start with measurable objectives and align content accordingly SRS 2.1, 2.2, 3.1, 4.1, 5.1, 6.1	Communicate AI use in syllabi and orientations SRS 1.4, 1.5, 1.6, 6.1, 6.4	Provide faculty development on AI literacy and ethics QM Consulting, QM PD, Online Teaching Support
Use AI to generate multimodal content SRS 4.4, 4.5, 8.4, 8.5, 8.6	Balance automated feedback with instructor presence SRS 3.4, 5.3	Create cross-functional teams for ethical oversight QM Consulting
Ensure accessibility through automated checks and user testing SRS 8.1, 8.2, 8.3, 8.4, 8.5, 8.6	Monitor AI effectiveness and gather learner feedback SRS 5.3, 6.1	Establish policies for tool and bias audits (Lenders & Calders, 2023) QM Consulting, QM PD
Personalize based on learner needs , not assumptions SRS 1.6, 2.5, 3.4, 3.5, 5.4	Prioritize empathy, mentorship, and connection SRS 5.3	Monitor impacts through disaggregated student data QM Consulting, QM PD
Explain why AI is used and how it supports learning goals SRS 6.1, 6.2	Ensure high-stakes decisions remain human-led (Shafei & Ahmed, 2024) SRS 3.3, 3.4, 5.3	Align AI use with institutional mission and learner equity QM Consulting, QM PD



Impact Through Quality Connections
November 3 – 5, 2025 | Tucson, Arizona

Tool Implementation for Engaging and Inclusive Courses

[Curipod](#), [Coursetune](#), [Sana Labs](#)

Brainstorm and ideate lessons aligned to quality standards

SRS 2.1, 2.2, 2.4, 2.5, 4.1, 4.2, 5.1, 5.2

[Gamma](#), [EquatIO](#), [Sonocent Audio Notetaker](#)

Auto-generate accessible, presentation-ready learning modules and content

SRS 4.1, 4.4, 4.5, 8.1, 8.2, 8.3, 8.4, 8.5

[DataRobot](#), [ConsentKit](#)

Promote data privacy and transparent AI decision making

SRS 6.3, 6.4

[ChatGPT](#), [Claude](#)

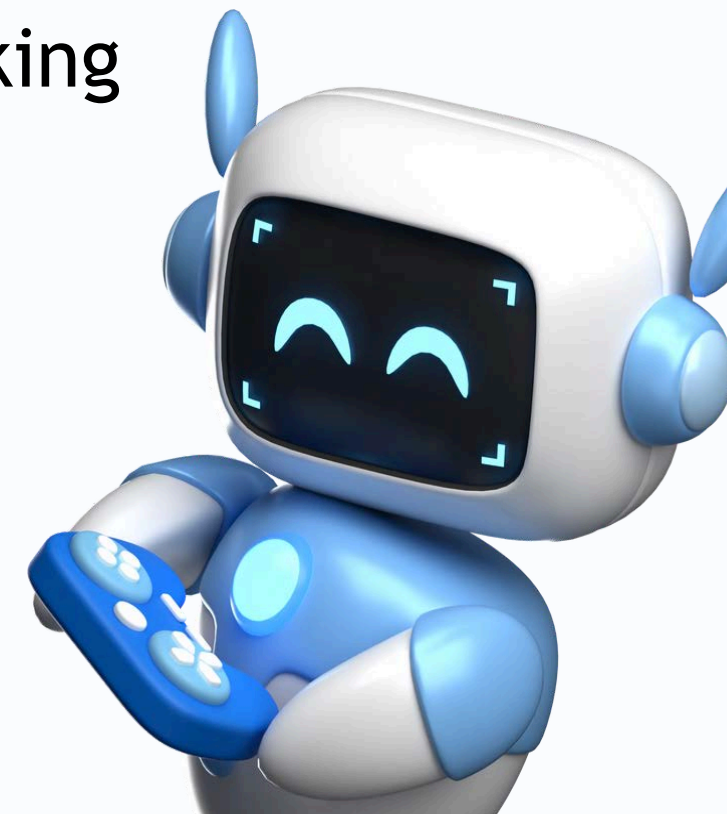
Draft objectives, rubrics, and outlines

SRS 2.1, 2.2, 3.3

[Canva Magic Design](#)

Design course visuals with AI suggestions

SRS 4.5, 8.4, 8.5, 8.6



Tool Implementation for Engaging and Inclusive Courses

Generate avatar-based video lectures with captions

SRS 4.4, 4.5, 8.5

AI coach for guided student practice

SRS 3.5, 5.2, 6.1, 6.2

Enhance videos with automated questions and feedback

SRS 3.4, 3.5, 4.4, 4.5

Promote fairness and reduce bias in online learning

SRS 8.1, 8.2, 8.5

Build gamified quizzes from lessons in seconds

SRS 3.4, 3.5, 5.2, 6.2

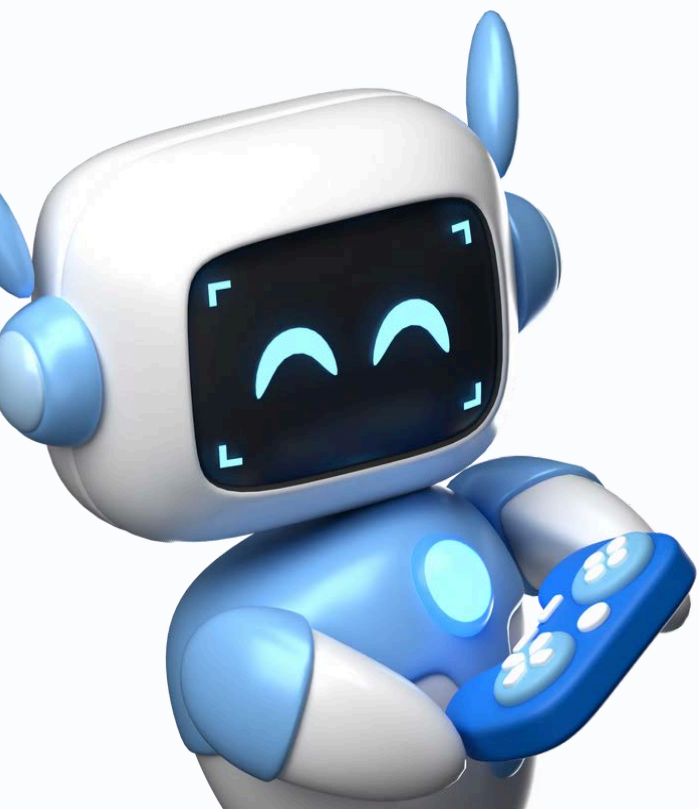
[Synthesia](#)

[Khanmigo](#) (Khan Academy)

[Edpuzzle + AI](#), [H5P Interactive Content Tool](#)

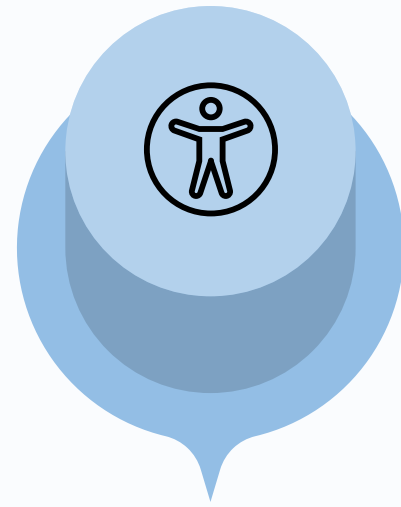
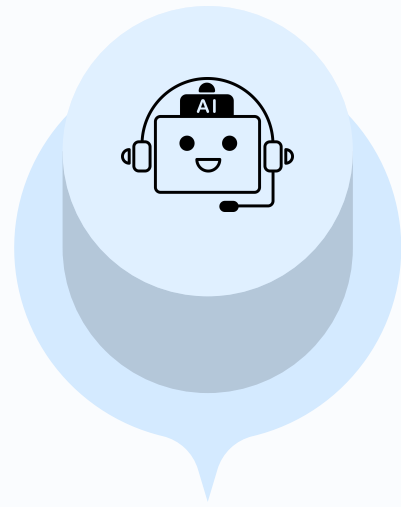
[Diversity.AI](#), [Fairlearn by Microsoft](#), [OpenMined](#), [Textio](#)

[Quizziz AI](#), [Mentimeter](#)



Next Steps for AI Implementation

**Start small:
Pilot one AI tool
in a low-stakes
activity**



**Prioritize
accessibility
and ethical
alignment**

**Collaborate with
instructional
designers and IT
teams**



**Collect student
feedback on
AI-enhanced
elements**

**Join a professional
learning
community
exploring AI in
teaching**



Thank you!

Q&A | Closing Remarks

NCCU IAIER

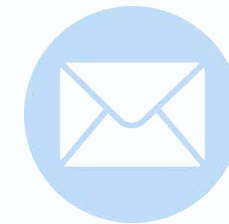


AllInstitute@nccu.edu



<https://www.nccu.edu/research/institutes-and-special-facilities/iaier>

QM Consulting



consulting@qualitymatters.org



<https://www.qualitymatters.org/qa-resources/consulting>



Impact Through Quality Connections
November 3 – 5, 2025 | Tucson, Arizona



Quality Matters (QM) is the global organization leading quality assurance in online and innovative digital teaching and learning environments. It provides a scalable quality assurance system for online and blended learning used within and across organizations. When you see QM Certification Marks on courses or programs, it means they have met QM Course Design Standards or QM Program Review Criteria in a rigorous review process.

qualitymatters.org
1997 Annapolis Exchange Pkway, Suite 300
Annapolis, MD 21401

Helping you deliver on your online promise